

FUJIFILM

Surveillance Camera

FUJIFILM SX801

Firmware Update Guide

FUJIFILM Corporation

BL00005167-200

Introduction

Contact a retailer near you for the latest firmware. There are two types of firmware for SX801:

- camera body firmware, distributed as "FPUPDATE.DAT", and
- IP firmware, distributed as files with names of the form "SX $x.x.x.x$.tar.gz", where " $x.x.x.x$ " is the version number (e.g., "SX1.1.5.2.tar.gz").

The firmware update procedure for the SX801 varies with whether it is performed in:

- stand-alone mode,
- RS485 mode, or
- LAN ONVIF mode.



CAUTION The IP firmware cannot be updated in stand-alone mode.

Stand-Alone Mode

Getting Ready

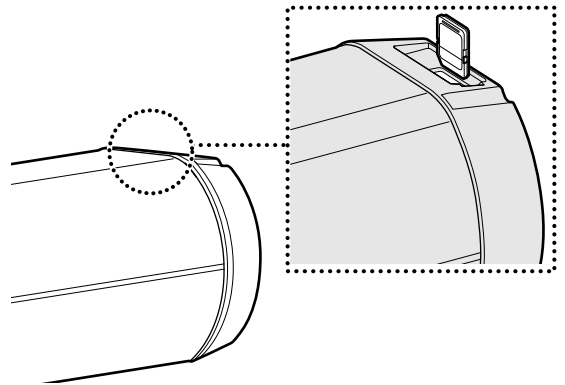
- 1 Ready a formatted SD memory card.
- 2 Connect a monitor to the SX801.
- 3 Ready the firmware update file on your computer.
Contact a retailer near you for the latest firmware.



TIP

Check that the firmware update file is named "FPUPDATE.DAT" and rename it to "FPUPDATE.DAT" if it is not. Updates cannot be performed using files with names containing parentheses (for example, "FPUPDATE(1).DAT").

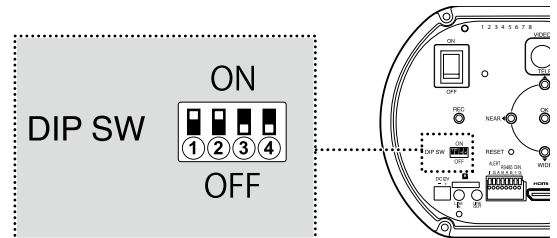
- 4 Copy the file readied in Step 3 to the memory card chosen in Step 1.
- 5 Insert the memory card from Step 4 into the card slot on the SX801.



6 Select stand-alone mode.

Select stand-alone mode using the DIP switches on the back of the camera. Set switches ① and ② to "ON" and switches ③ and ④ to "OFF".

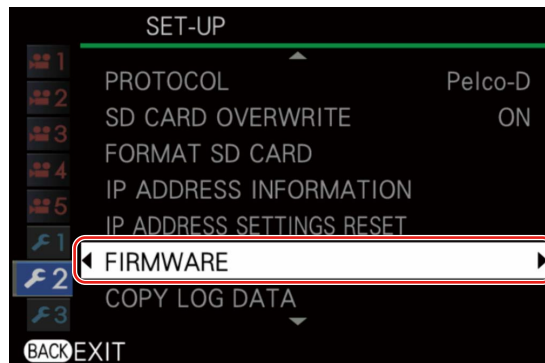
Operating mode	DIP switch			
	①	②	③	④
LAN ONVIF mode	OFF	ON	OFF	OFF
RS485 mode	ON	OFF	OFF	OFF
Stand-alone mode	ON	ON	OFF	OFF



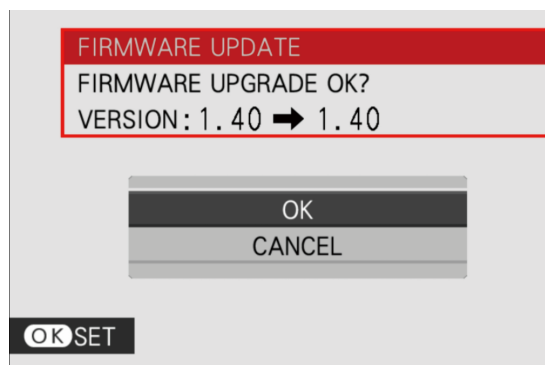
Updating the Firmware

TIP The camera is operated via the control panel. For more information, see the *Detailed Operating Instructions (Stand-Alone Mode)*.

- 1 Turn the camera on.
- 2 Select **FIRMWARE** in the second page of the setup menu.



- 3 A confirmation dialog will be displayed.
Highlight **OK** and press the OK button to proceed.



CAUTION Do not turn the camera off until the update is complete.

The update will complete in about two or three minutes, after which the camera will restart automatically.

The firmware update is now complete.

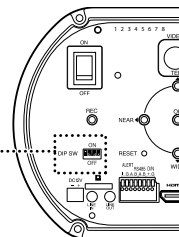
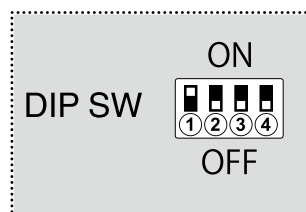
RS485 Mode

Getting Ready

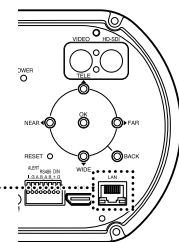
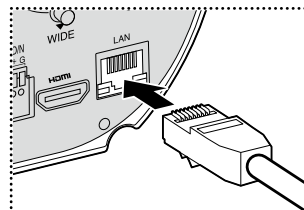
1 Select RS485 mode.

Select RS485 mode using the DIP switches on the back of the camera. Set switch ① to “ON” and switches ② through ④ to “OFF”.

Operating mode	DIP switch			
	①	②	③	④
LAN ONVIF mode	OFF	ON	OFF	OFF
RS485 mode	ON	OFF	OFF	OFF
Stand-alone mode	ON	ON	OFF	OFF



2 Use an Ethernet cable to connect the camera to a computer.



3 Check the firmware version using Pelco commands.

For more information, see Pelco command specification, available for download from:

https://www.fujifilm.com/support/surveillance_camera/

4 Ready the firmware update file on your computer.

Contact a retailer near you for the latest firmware. There are two types of firmware:

- camera body firmware, distributed as “FPUPDATE.DAT”, and
- IP firmware, distributed as files with names of the form “SXx.x.x.x.tar.gz”.



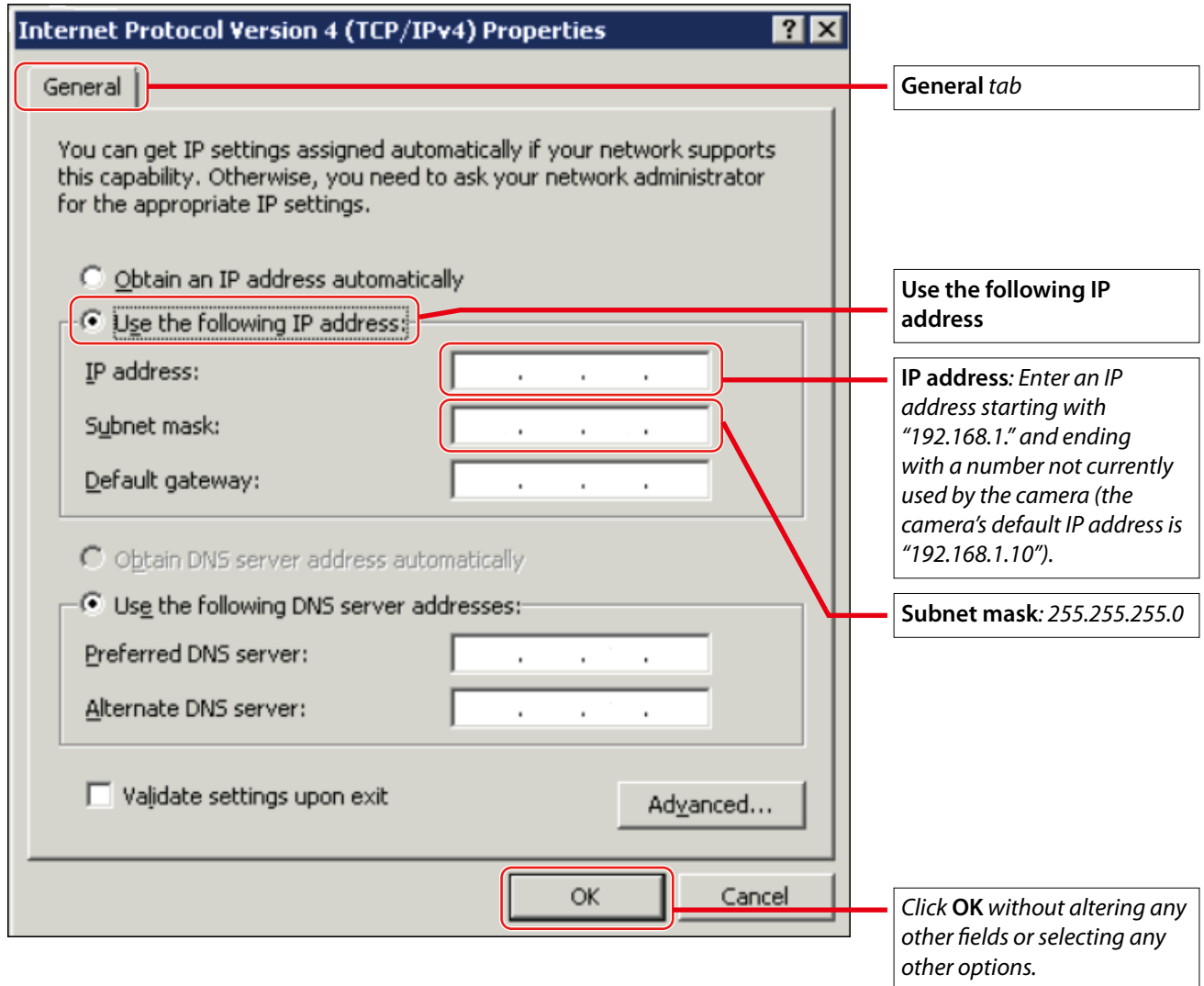
TIP

Check that the firmware file is named “FPUPDATE.DAT” or “SXx.x.x.x.tar.gz”, where “x.x.x.x” is the version number (e.g., “SX-1.1.5.2.tar.gz”); if it is not, rename it as described above. Updates cannot be performed using files with names containing parentheses (e.g., “FPUPDATE(1).DAT” or “SX1.1.5.2(1).tar.gz”).

5 Complete the following step for direct Ethernet connections between the computer and SX801. For network-mediated LAN connections, configure both the computer and SX801 for connection to the network.

Select an IPv4 address for the computer (Windows 10).

- ① Select **Control panel > Network and Internet > Network and Sharing Center > Access type > Properties** and double-click **Internet Protocol Version 4 (TCP/IPv4)**.
- ② The "Internet Protocol Version 4 (TCP/IPv4) Properties" dialog will be displayed; enter an IP address and subnet mask and click **OK**.



Updating the Firmware

- 1 Turn the camera on.
- 2 Send a firmware update command from the Pelco command list.

Contact a retailer near you for the latest firmware.

If the command was sent successfully, the camera will temporarily enter IP mode.

- 3 Double-click **SX 801 VideoManager.exe**.

VideoManger is available for download from:

https://www.fujifilm.com/support/surveillance_camera/

When the app launches, the camera's IP address ("192.168.1.xx, where "xx" is the camera ID) will be displayed.



Enter a user ID and password if prompted.

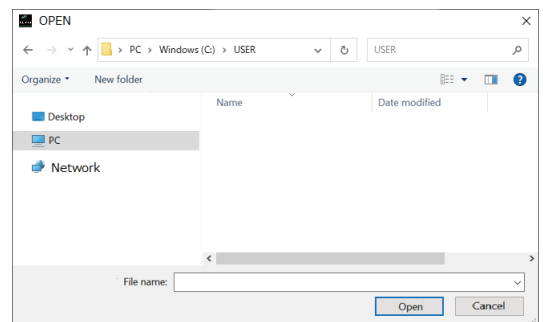
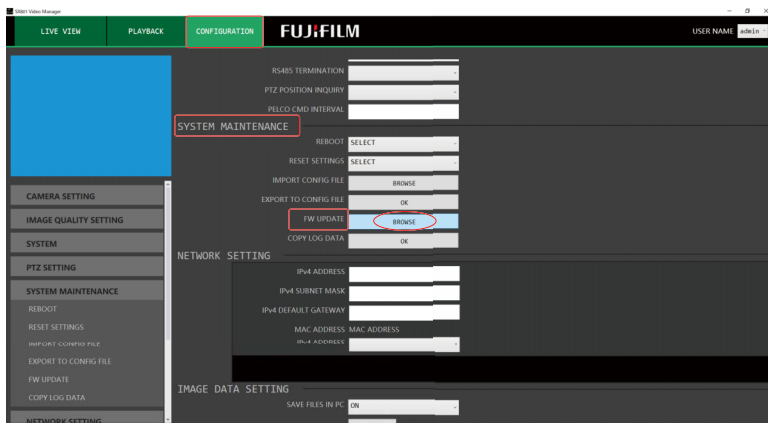
- 4 Select **CONFIGURATION > SYSTEM** in the camera menus and check the current firmware version.
- 5 In the camera menus, select **CONFIGURATION > SYSTEM MAINTENANCE > FW UPDATE** and click **BROWSE**, then select the file you readied earlier and click **OPEN** to begin the firmware update.

There are two types of firmware:

- camera body firmware, distributed as "FPUPDATE.DAT", and
- IP firmware, distributed as files with names of the form "SXx.x.x.x.tar.gz".



TIP Check that the firmware file is named "FPUPDATE.DAT" or "SXx.x.x.x.tar.gz", where "x.x.x.x" is the version number (e.g., "SX-1.1.5.2.tar.gz"); if it is not, rename it as described above. Updates cannot be performed using files with names containing parentheses (e.g., "FPUPDATE(1).DAT" or "SX1.1.5.2(1).tar.gz").

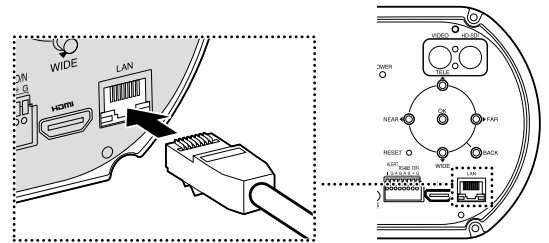


Camera firmware updates take about twenty minutes and IP updates about two. The camera will restart automatically, and the SX801 Video Manager login dialog will be displayed when the update is complete.

LAN ONVIF Mode

Getting Ready

- 1 Use an Ethernet cable to connect the camera to a computer.



- 2 Ready the firmware update files on your computer.

Contact a retailer near you for the latest firmware. You will need:

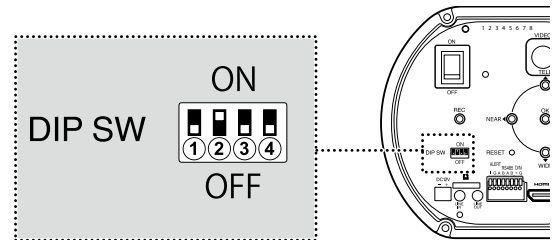
- camera body firmware, distributed as “FPUPDATE.DAT”,
- IP firmware, distributed as files with names of the form “SX $x.x.x.x$.tar.gz”, and
- SX801 VideoManager.exe.

TIP Check that the firmware file is named “FPUPDATE.DAT” or “SX $x.x.x.x$.tar.gz”, where “ $x.x.x.x$ ” is the version number (e.g., “SX-1.1.5.2.tar.gz”); if it is not, rename it as described above. Updates cannot be performed using files with names containing parentheses (e.g., “FPUPDATE(1).DAT” or “SX1.1.5.2(1).tar.gz”).

- 3 Select LAN ONVIF mode.

Select LAN ONVIF mode using the DIP switches on the back of the camera. Set switch ② to “ON” and switches ①, ③, and ④ to “OFF”.

Operating mode	DIP switch			
	①	②	③	④
LAN ONVIF mode	OFF	ON	OFF	OFF
RS485 mode	ON	OFF	OFF	OFF
Stand-alone mode	ON	ON	OFF	OFF



Updating the Firmware

- 1 Turn the camera on.
- 2 Connect the camera and computer using an Ethernet cable.
- 3 Double-click **SX 801 VideoManager.exe**.
The camera's IP address ("192.168.1.xxx", where "xxx" is the camera ID) will be displayed when the app launches.

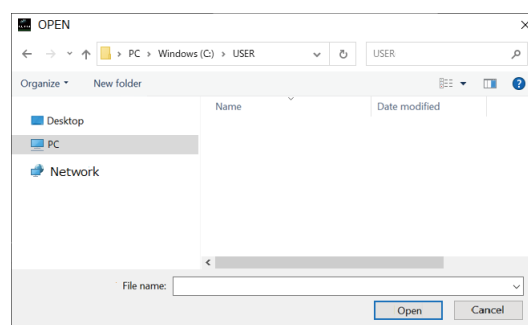
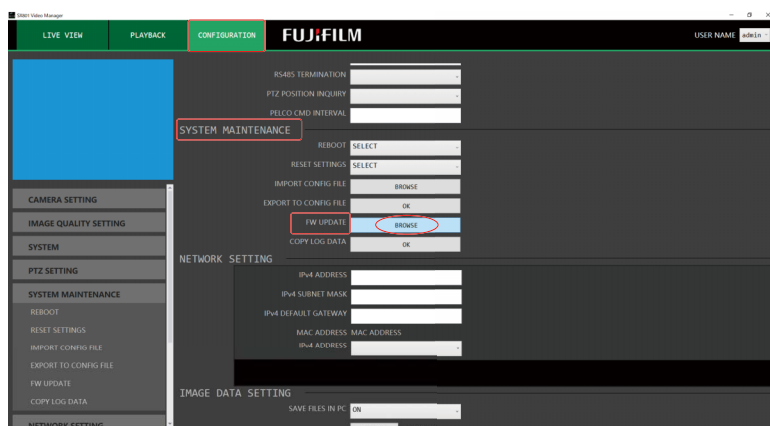


- 4 Select **CONFIGURATION > SYSTEM** in the camera menus and check the current firmware version.
- 5 In the camera menus, select **CONFIGURATION > SYSTEM MAINTENANCE > FW UPDATE** and click **BROWSE**, then select the files you readied earlier and click **OPEN** to begin the firmware update.
There are two types of firmware:
 - camera body firmware, distributed as "FPUPDATE.DAT", and
 - IP firmware, distributed as files with names of the form "SXx.x.x.x.tar.gz".



TIP

Check that the firmware files are named "FPUPDATE.DAT" and "SXx.x.x.x.tar.gz", where "x.x.x.x" is the version number (e.g., "SX1.1.5.2.tar.gz"); if it is not, rename them as described above. Updates cannot be performed using files with names containing parentheses (e.g., "FPUPDATE(1).DAT" or "SX1.1.5.2(1).tar.gz").



Camera firmware updates take about twenty minutes and IP updates about two. The camera will restart automatically, and the SX801 Video Manager login dialog will be displayed when the update is complete.

FUJIFILM

FUJIFILM Corporation 7-3, Akasaka 9-chome, Minato-ku, Tokyo 107-0052, Japan
<http://www.fujifilm.com/>